

## Managed Media Converter Solutions

### Chassis Type Managed Media Converter



AF-101FT



Single Fiber  
AF-101C/AF-101R



Dual Fiber  
AF-102S

### Standalone Type Media Converter

#### AF-101FT, AF-100 Series

AF-101FT Intelligent Media Converter Chassis provides 18 slots 10/100Base-TX converts to 100FX media converter to link with the remote side media converter. Each media converter can be easily plugged in chassis and can be choice with range of single or dual fiber options. AF-101FT also supports console, telnet, web, SNMP, and event SNMP trap management interfaces.

AF-100 Series Standalone Media Converter can be choice with range of single (AF-101C/AF-101R) or dual (AF-100S/AF-102S) fiber options. To meet your various demands, AF-100 series support remote TP monitoring and loop back test functions. Multiple AF-100 series and one AC power cord can be installing in the tray to mount on the 19" or 23" rack.

#### AF-101FT

##### Chassis

- Managed modular media converter center rack
- 19-inch or 23-inch rack mountable and 2U height
- Accommodate up to 18 EFT cards of media converters
- Support hot-swappable installation and plug - play function
- Support optional console, telnet, web, SNMP, and event SNMP trap management interfaces
- Software upgrade via TFTP
- Support NTP
- Support full range of commercial AC power supply
- Support - 48VDC power supply
- Full power supply redundancy

## The Specifications of Chassis: AF-101FT

引領科技生活 · 創新人文價值

### Chassis:

System Model	AF-101FT-01A	AF-101FT-02A	AF-101FT-01D	AF-101FT-02D
Management:	Managed	Managed	Managed	Managed
LEDs:	Power status, NMU status, System and FAN Alarm status, TP/FX port link status			port link status
Number of Power:	1 AC power	2 AC power	1 DC power	2 DC power
Input Voltage:	90-264VAC	90-264VAC	-36~-72VDC	-36~-72VDC
Power Supply:	75W	75W	75W	75W
Cooling:	Fan	Fan	Fan	Fan
19"/23" Rack Mount:	Yes	Yes	Yes	Yes
Number of MC Slots:	18	18	18	18

### Mechanical:

Chassis Dimension (WxHxD):	443x91x300 mm	443x91x300 mm	443x91x300 mm	443x91x300 mm
Weight:	6.1kg	6.9kg	5.8kg	6.4kg

(With 1 or 2 AC/DC power, management module and no MC converters)

### Environmental:

	Operating Temperature	Storage Temperature	Relative Humidity
	0°C to 45°C	-20°C to 80°C	5%~90% non-condensing
EMI:	Comply with FCC part 15, CE, VCCI & CISPR 22 class A		
Surge:	Comply with IEC 61000-4-5 class 2, FCC part 68		
Safety:	Comply with IEC 60950, UL1950		

## EFT(1) & AF-100 Series

### Key Features:

10/100Base-TX to 100Base-FX Plug in Converters

- Convert speed and media type
- Support full wire speed conversion setting
- Support 10/100M dual speed on TP connections
- Each TP port supports auto-negotiation and auto-MDI/MDI-X detection
- Far End Fault function on FX port
- Support center chassis management
- Low power consumption, and remote power shutdown detection
- Support wide range of fiber options:
  - Single SC, or Dual SC, optional others type
  - Single mode duplex fiber, Single fiber or Dual fiber
  - Short reach, medium reach, and long reach fiber connections
- Provide indications of remote media converter's TP port status and remote configuration
- Provide Loopback Test function with connected remote media converter

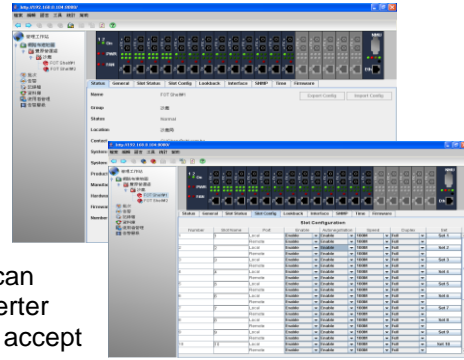
### The Specifications of Standalone and Chassis type EFT

TP Port:	IEEE 802.3 10Base-T, IEEE 802.3u 100Base-TX Shielded RJ-45 jacks with Auto MDI/MDI-X detection Auto-negotiation for speed and duplex auto detection Speed for 10Mbps or 100Mbps Full-duplex or half-duplex support
FX Port:	IEEE 802.3u 100Base-FX compliant Forced 100Mbps, full duplex Far end fault Function SC connector or WDM Simplex SC connector
Cable:	Cat. 5 UTP cable SMF - 9 /125µm, 1310nm or 1310/1550nm
LEDs:	Power status TP Ports: Link/Act, Speed, Duplex status FX Ports: Link/Act status, Fiber Tx/Rx signal detected
DIP Switch:	Auto-nego / Speed / Duplex setting switch (AF-100 only)
Packet Size:	10Base-T: Up to 14,880 packets per second 100Base-TX: Up to 148,800 packets per second
Environment:	Operating Temperature      Storage Temperature      Relative Humidity 0°C to 45°C (indoor)      -20°C to 80°C      5% to 90% non-condensing 0°C to 60°C (outdoor)
Weight:	Chassis type EFT: 85g; Standalone AF-100 series: 260g
Dimensions:	Chassis type EFT (HxWxD): 91 x 21 x 115 mm; Standalone AF-100 series: 28 x 88 x 115 mm
Operating voltage:	+12VDC, or +12VDC and -48V DC IN (Device DC Input: AF-100 Series only)
Power consumption:	3 watts. (Max.)
EMI:	Comply with FCC part 15, CE, VCCI & CISPR 22 class A
Surge:	Comply with IEC 61000-4-5 class 2, FCC part 68
Safety:	Comply with IEC 60950, UL1950

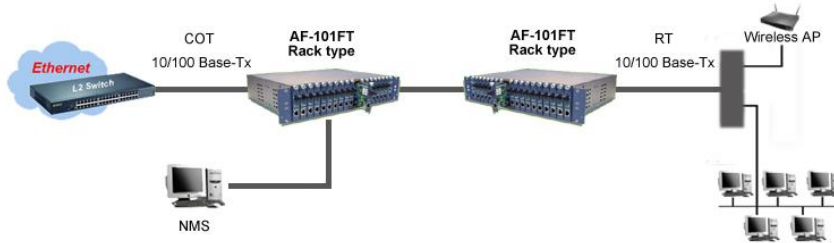
## AEM-2000 NMS

AEM-2000 is a Java-based, client/server GUI Network Management System (NMS) to manage at least 3,000 A-First's Media Converter system. AEM-2000 provides OAM&P functions such as the daily record of the network activity Log, Alarm, Equipment Firmware Upgrading, Configuration Management, Security Management, Fault Management, and Group Management etc.

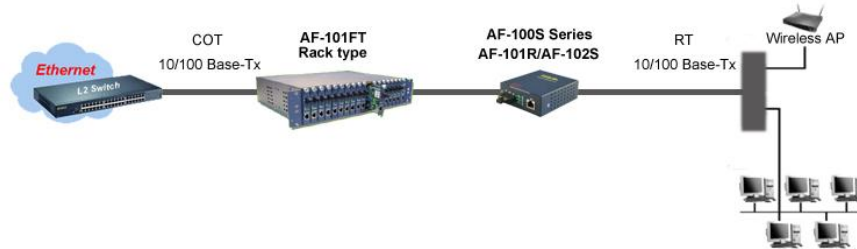
AEM-2000 adopts the three layers of types structural design, can offer the management that a lot of users carry on Media Converter equipment through the browser at the same time, whether can accept Trap of equipment is it carry on real-time processing to come.



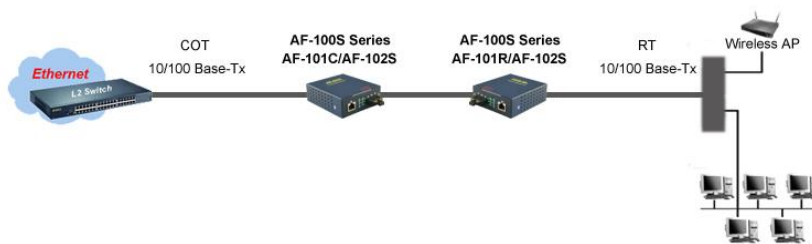
## 10/100Base-TX Ethernet Network Media Converter Application:



Application (a): Managed Chassis Type MC (COT) - Chassis Type MC (RT)



Application (b): Managed Chassis Type MC (COT) – Standalone Type MC (RT)



Application (c): Standalone Type MC (COT) - Standalone Type MC (RT)

\*All specifications subject to change without notice.

**首特科技股份有限公司**  
**A-FIRST TECHNOLOGY CO., LTD.**

---

總公司 Head Office :

新竹市東美路 91 巷 3 號 3 樓

TEL: +886-3-5728282

E-mail: [service@a-first.com.tw](mailto:service@a-first.com.tw)

<http://www.a-first.com.tw>

新竹 Office :

新竹縣 31040 竹東鎮中興路四段 195 號 53 館 418 室

Bldg.53, Room 418, 195, Sec.4, Chung Hsin Rd., Chutung, Hsinchu, Taiwan

TEL: +886-3-5838183 FAX: +886-3-5833308

南區 Office :

高雄縣 83143 大寮鄉民興街 12 巷 12 號

TEL: +886-7-7035243